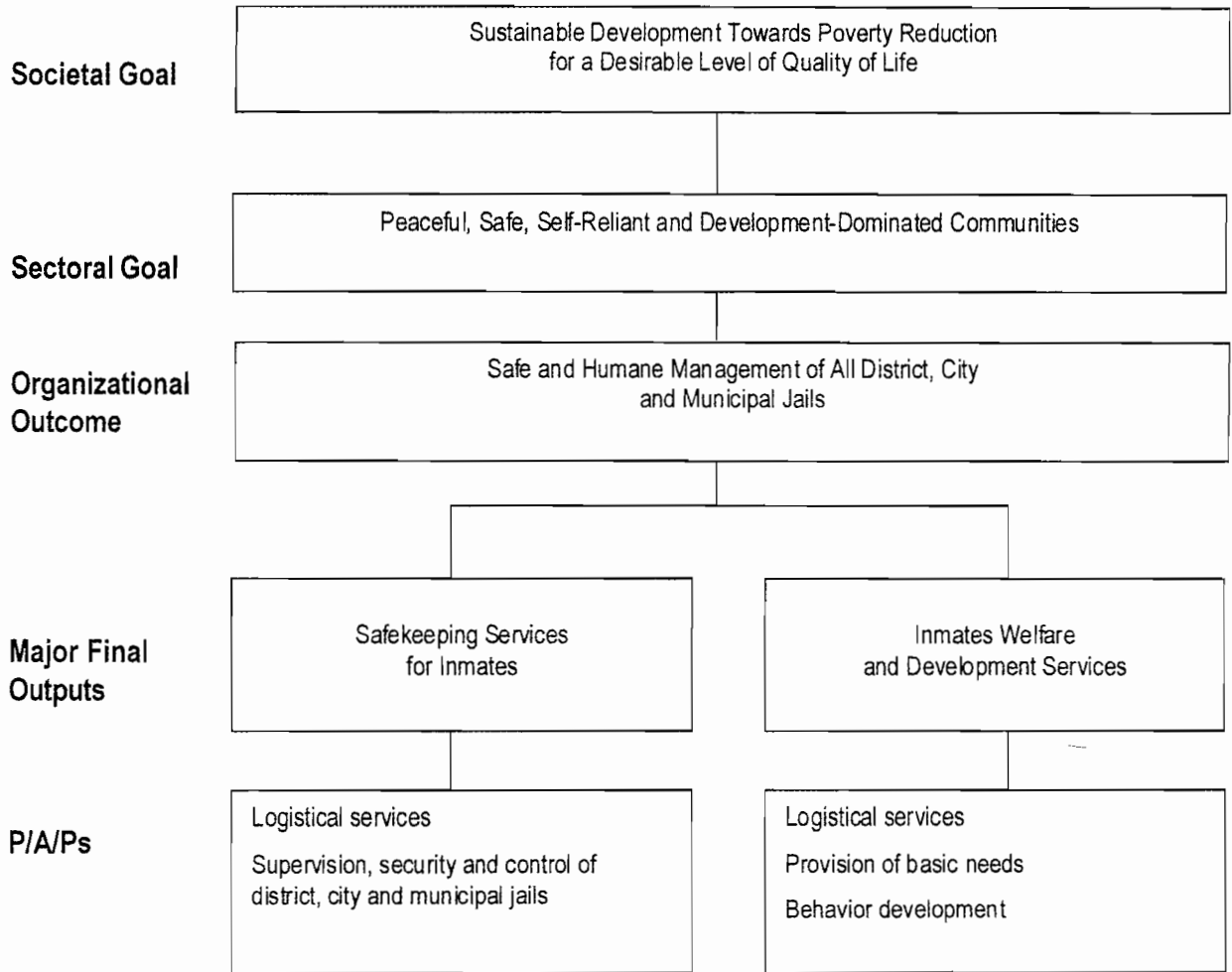


# ORGANIZATIONAL PERFORMANCE INDICATOR FRAMEWORK (OPIF)

## LOGICAL FRAMEWORK (BJMP)



## PERFORMANCE MEASURES AND TARGETS

(Amounts in Thousand Pesos)

Particulars	FY 2010		FY 2011	FY 2012
	Target/Amount	Actual/Amount	Target/Amount	Target/Amount
<b>MFO 1</b>				
<b>Safekeeping Services of Inmates</b>	<b>2,002,447</b>	<b>1,980,459</b>	<b>2,318,023</b>	<b>2,577,054</b>
Ratio of escapees vis-à-vis total jail population	1 : 1,500	* 1 : 1,343	1 : 2,000	1 : 2,500
No. of facilities improved	165:165	165:189	173:173	200:200
% of inmates released within the prescribed period to the total number of inmates due for release	100% of 46,515	65.66% of 30,541	100% of 46,515	100% of 46,515
<b>MFO 2</b>				
<b>Inmates' Welfare and Development Services</b>	<b>3,118,396</b>	<b>3,084,004</b>	<b>2,835,030</b>	<b>3,040,299</b>
% of district, city and municipal jails with separate cells for women inmates	2% of 83 jails	2% of 83 jails	2% of 81 jails	2% of 81 jails
% of inmates provided with:				
Paralegal Services	100%	107%	100%	100%
Spiritual Services	100%	89%	100%	100%
Medical/Dental Services	100%	105%	100%	100%
Livelihood Services	20%	22%	20%	20%
Formal/Non-formal Education	10%	14%	10%	10%
Physical Fitness and Recreation	100%	77%	100%	100%
Psychological Services	5%	21%	5%	5%
Absence of human rights violations by BJMP personnel	100%	100%	100%	100%
No. of contrabands confiscated:	zero entry		zero entry	zero entry
Money (amount)	of contrabands	P1.280 M	of contrabands	of contrabands
Cell phones	and other	346	and other	and other
Prohibited drugs (in grams)	similar		similar	similar
Shabu	items	97	items	items
Marijuana		98		
Drug use paraphernalia		1,224		
Liquor (in ltrs)		38		
Deadly bladed/improvised weapons		5,840		
Others		51,208		
<b>TOTAL</b>	<b>5,120,843</b>	<b>5,064,463 <sup>1/</sup></b>	<b>5,153,053 <sup>2/</sup></b>	<b>5,617,353 <sup>3/</sup></b>

Notes:

1/ Includes Pension of P598.575 Million

2/ Includes Pension of P598.575 Million

3/ Includes Pension of P696.621 Million